

SPRING 2024

TGTM

TEXAS REAL ESTATE RESEARCH CENTER
TEXAS A & M UNIVERSITY

In This Issue

NEW! Rural land insights

Tips for insuring a second home

Corporate Transparency Act's
new reporting requirements

Texas a powerhouse
food-manufacturing state

And much more

Keeping It Clean

Texas Property Assessed Clean Energy Act

By Harold D. Hunt



Key Takeaways

- The Property Assessed Clean Energy Act (PACE) makes it feasible for commercial property owners to install energy efficiency and water conservation upgrades.
- Improvements must be permanently fixed to commercial property.
- Local governments can choose to offer PACE in specific geographic areas.
- Helps create more jobs in manufacturing, construction, and service sectors.

Financial barriers have discouraged many commercial building owners in Texas from investing in energy efficiency and water conservation upgrades. Structures in Texas account for approximately 70 percent of electricity use and 40 percent of total energy use according to the state comptroller. The Texas Property Assessed Clean Energy (PACE) Act was designed to address those barriers by making such investments financially feasible.

Ten years have passed since the PACE Act was adopted by the Texas Legislature and signed by then-governor Rick Perry. Low interest rates and the pandemic initially hindered the program's popularity. However, today's higher interest rate environment has worked in the program's favor.

What is the PACE Program?

The PACE program enables owners of commercial and industrial properties to obtain low-cost, long-term loans targeted at reducing energy and water consumption. Loans can be up

to 100 percent of all costs associated with the design and installation of the upgrades, up to a maximum of 25 percent of the property's as-complete market value. Loans can cover labor and material costs expended during the installation or modification of improvements, permit fees, inspection fees, lender's fees, program application and administrative fees, project development and engineering fees, independent third-party reviewer (ITPR) fees, and any other fees or costs incurred during the installation process.

State law enables but does not require cities and counties to offer a PACE program. If a local government chooses to offer PACE, the governing body is required to designate the specific geographic area (the "region") where PACE assessments can be placed. Regional PACE programs can make it easier for rural counties and smaller local governments to offer PACE financing.

Participating properties must be inside the jurisdiction of a city or

THIS LITHIUM BROMIDE ABSORPTION HEAT PUMP, which recovers waste heat to produce useful hot water for heating and industrial processes, is the kind of energy-saving technology PACE is intended to help finance.

county PACE program. Property owners interested in participating can contact local county or city officials to determine whether a PACE program is in place. If not, scan the QR code for information on creating one.



Another helpful website is [Texaspaceauthority.org](https://www.texaspaceauthority.org) (QR code). The site lists PACE lenders, PACE contractors, a map of 94 local or county governments with a PACE program in Texas, and a list of projects completed since inception. Contractors and engineers familiar with the PACE program are listed along with the maximum and minimum amounts lenders will fund and where they are located. Capital stack examples and case studies of completed projects are also available.

Program Benefits

The program offers commercial property owners a number of benefits.

Retrofits or new construction upgrades financed using the PACE program are designed to generate positive cash flow to property owners. The quality and efficiency of a region's building stock is improved while helping to create more jobs in the manufacturing, construction, and service sectors. PACE can also put underused properties back on the tax rolls.

Finally, PACE projects qualify for any additional rebates and incentives offered by governments, utility providers, or manufacturers.

How Financing Works

PACE loans are secured by annual property assessments and are automatically transferred to successive property owners in a sale.

The PACE Act authorizes two sources for financing PACE assessments that are secured by a property lien: third-party financing (private



lenders) and public financing (bonds). Although local governments have the option to issue bonds for PACE financing, none in Texas have chosen to do so. Private funding minimizes local government risk associated with PACE projects.

Each property owner pays only the portion of an assessment that accumulates during their ownership. Thus far, Texas has had minimal experience with transfers. Assessments can also be passed through to tenants in commercial lease agreements.

Local government enforcement is nonrecourse and limited to past-due installments and related penalties. Any assessments in arrears are also subject to the enforcement terms in the underlying loan agreement enforceable by the lender under contract law. However, any installments that have not yet come due are not eligible for debt collection.

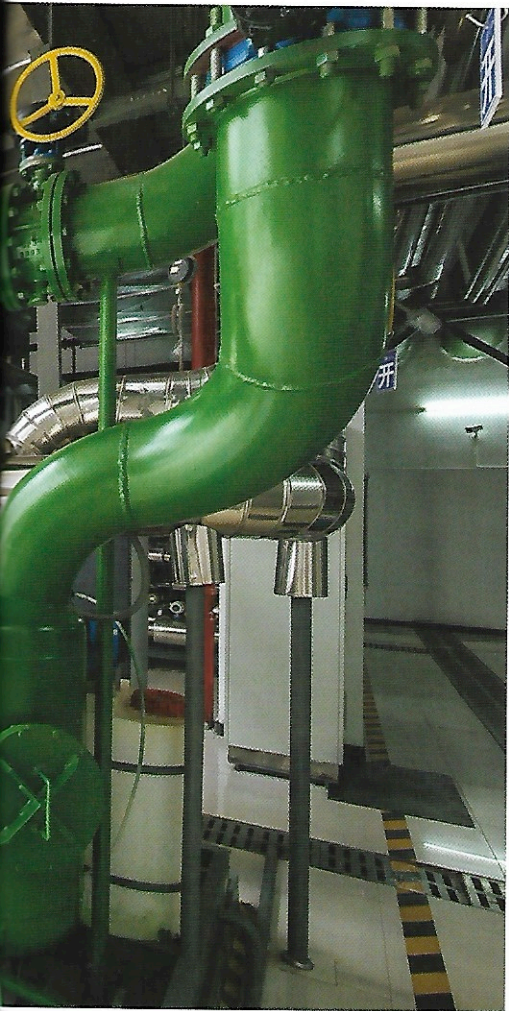
A PACE lien is a first lien against the property and has the same priority status as a lien for ad valorem

taxes. The senior lien status of PACE assessments reduces the risk of non-payment, making PACE loans more secure and attractive to lenders.

Lenders also benefit from PACE financing because the property is protected from income losses and valuation declines resulting from deferred maintenance.

"Deferred maintenance is the last untapped economy in Texas," said Charlene Heydinger, president of Texas PACE Authority (TPA) and a third-party administrator. "If we can help companies deal with deferred maintenance, think of the jobs that would be created."

"PACE loans secured by a tax assessment lien are a very safe investment. But a major hurdle to doing a PACE loan is always going to be getting the senior lender on board," said PACE lender Sean Ribble, Senior Director of Originations for Nuveen Green Capital. "Banks may be wary of PACE at first, but they also want to do business with commercial property



For information on how local governments can establish a PACE program in their regions, read Hunt's complete article online by scanning the QR code.

delinquencies just like a suit to collect unpaid property taxes.

Positive cash flows to the property owner are achieved immediately because cost savings must exceed the PACE assessment to qualify. Improvement costs are amortized over their useful life. However, the term of the PACE financing agreement cannot exceed the useful life of the upgrades.

"PACE is a great program, but 25- to 30-year fixed rate loans are traditionally a better fit for the institutional sector," said Ribble. "There is a duration risk for traditional lenders paying short-term rates to depositors that can change quickly while being tied to long-term, fixed-rate loan revenues. PACE loans are a much better match and a great source of revenue for life insurance companies and pension funds. Those groups are also being asked to show some percentage of a green component in their investment portfolios. PACE fits that requirement nicely."

The PACE Act permits PACE assessments to be placed on privately owned commercial real property (including not-for-profit real property), privately owned industrial real property or privately owned residential real property consisting of five or more dwelling units. The act specifically excludes "undeveloped" lots and any government-owned real property.

"If the local central appraisal district (CAD) determines that a property is improved under the property tax code, it is considered developed for purposes of the PACE Act," said Heydinger.

The Act authorizes PACE funding for the installation of "qualified" improvements. Qualified improvements must be permanently fixed to the real property and decrease water and/or energy consumption. This includes renewables and products or devices on the customer's side of the meter

that use energy-related technology to generate electricity, provide thermal energy, or regulate temperature.

Multiple energy and/or water saving measures may be installed. The useful life of a project implementing multiple upgrades is calculated using a weighted average. As with single upgrades, the weighted average must be longer than the assessment term.

Property owners must demonstrate the financial ability to pay PACE assessments. Participants must verify that they are the legal property owner, are current on mortgage and tax payments, are not insolvent or bankrupt, and hold clean title to the property.

Getting the Word Out

"The biggest challenge we face with the PACE program is visibility," said Heydinger. "Unfortunately, few people in Texas know about it. We try to get in front of every chamber of commerce, economic development council, commercial property trade organization, and real estate council to educate them. Property owners and managers are another group. But the group TPA really needs to get in front of is commercial brokers who are helping put the capital stacks together for financing. My ultimate goal is to help make PACE boring. After everyone uses it and trusts it, PACE will hopefully become an integral part of financing for commercial properties in Texas."

"Hopefully, the PACE program will continue to grow," says Glenn Silva, Chief Operating Officer of Lone Star PACE and a PACE program administrator. "Texas is seeing significant in-migration from around the country, and those folks aren't bringing any extra water or energy with them." 📌

Harold D. Hunt, Ph.D. (hhunt@tamu.edu) is a research economist with the Texas Real Estate Research Center.

owners. By adding a PACE loan to the capital stack, a bank can keep dry powder on the credit side by lowering their loan amount while still fostering a relationship with the property owner."

When a pre-existing mortgage lien on a property is in place, that mortgagee must be given written notice of the owner's intention to participate in the PACE program at least 30 days before entering into a PACE contract. Furthermore, the pre-existing mortgagee must give written consent to participation in the PACE program."

The lien takes effect when it is recorded in the property records and runs until the assessment, interest, and any penalty are paid in full. Any unpaid portion transfers to a new owner in a sale and is not eliminated by foreclosure.

Delinquent installments of the assessments incur the same interest and penalties as delinquent property taxes. A local government may recover costs and expenses, including attorney's fees, to collect any